



INDOOR PARTRIDGE STOCK CAGES



Designed by **Dr. Muhterem Aydoğan**
(Veterinarian, Zootechnician)

COMFORTPLAST™

PATENTED DESIGN, UNIQUE IN THE WORLD...

ComfortPLAST Series Partridge Stock Cages have been **designed** considering every detail for your partridges welfare and health.

Cimuka's Modular Cage System offers partridge producers the outstanding production performance , best possible hygiene, easily enriched, great shipping simplicity, easy assembly and plenty of spare parts, easy repair.

Our 35 years of production experience is your success. Sturdy construction, high quality plastics and anodized aluminium parts combined with our innovative design for years of superior performance.

“

**PRODUCTION PERFORMANCE,
HIGH HYGIENE STANDARDS,
EASY TO USE,
EASILY ENRICHED,
NEVER RUSTING.**

”



BRILLIANT – MODULAR STRUCTURE...

Comfortplast Partridge Stock Cages are computer designed and manufactured with long lasting high quality material.

Mesh structure is manufactured with full polypropylene (PP) plastic material and no need for fixing materials to assembly.

All models are supplied in flat packs. Small and low-weight packs decrease delivery costs up to 85%.



STURDY AND FUNCTIONAL...

Sturdy and functional block structure ensures long lasting, easy usage, very easy to clean even with pressure washers and easy to disinfect.

Cage tiers are assembled by butterfly locks and cross connections without any need to fixing materials.

Every tier has 4 pc aluminium support profiles to increase rigidity of block.

Cage legs connected to tiers with strong fixing materials. Top and bottom block fixer bridges carry the weight of the water reservoir, bottom floor manure tray, also enhances the stability of block structure.



EXPANDABLE DESIGN...

Expandable design offers increase in capacity without using a new block.

Tiers are placed directly on top of one another. Two, three or four single tiers can be towered together.

EASY TO MOVE...

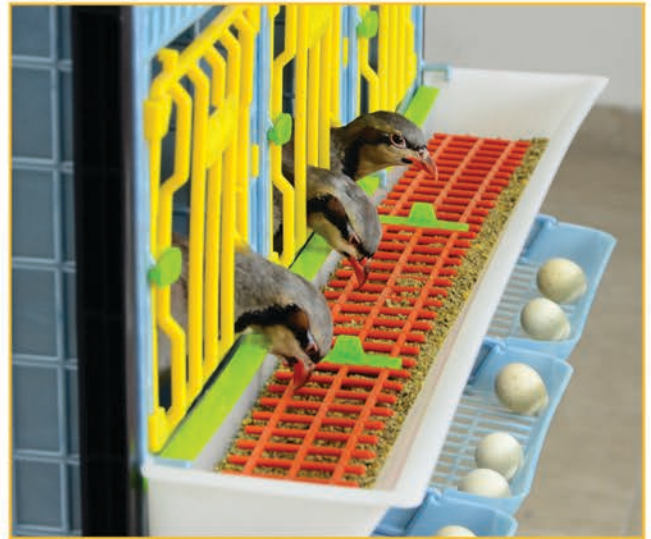
Block models have lockable wheels for easy movement.



HIGH CAPACITY FEEDERS...

Cages have large feeders go through the tiers. They can be installed easily without any fixing materials. 3 section model feeders have about **3-4 kg capacity**. Large capacity feeders save you time for feeding.

Feeder material is **Polypropylene (PP)** plastic for easy cleaning and essential for feed contact. Clear, strong and rigid structure ensures long lasting and hygienic feeding. Innovative feeder grill design minimizes feed loss and gives up to 30% feed saving. Flexible grill moves with feed level and stops feed from distributing and allows partridges to obtain adequate feed with a minimum of competition from other birds.



HYGIENIC WATERING...

Hygienic water is vital for a successful breeding. Comfortplast partridge stock cages have nipple-cup system that provides hygienic automatic watering for partridges.

Square watering pipes are ready with nipples. Cups are specially designed for partridges that the distance between stainless steel nipple and cup is ideal to prevent partridges from wetting the floor, manure tray, themselves and their chest feathers.

Closed water nipple system prevents bird to bird cross contamination and provides sufficient space to obtain water with minimum disturbance and competition from other birds.

Height of the watering pipes is 2-level adjustable for different ages and species of partridges. Each section have 1 nipple-cup and can be supplied optionally 2 nipple cup for back-up function in case of failure of first nipple.

All models have different size water reservoirs as 4, 8, and 20 liter capacity. Semi-transparent containers help user to see water level. Reservoir filter prevents big materials to go water line and effecting nipples. Water line has thick black hose for preventing moss and algae.

No need of glue or connectors for watering assembly. All installation can be done by hand, fast and easily. This helps user for periodic cleaning of water line.

Water goes to tiers by T pipe connectors and all models have end connector for water discharge.



CORRECT FLOOR SLOPE...

Eggs roll out of the cage floor slope clean. It helps protect eggs for bird damage.

Plastic material decreases visible and invisible egg cracks and so increase egg production, self-life of eggs and hatchability of fertile eggs.



ELLIPTIC FLOOR FOR BETTER WELFARE...

Specially designed integrated nonwoven plastic floor offers better standing, walking and coupling results in more egg production and increase in fertility.

Innovative elliptic floor design provides more comfort in 1 or 2 leg stand position, increases rigidity of floor, and improves egg roll-out.

Manure passes easily to tray.



PLASTIC MANURE TRAYS...

Every tier has high rigidity plastic manure trays. Large trays prevent mixing of manure with below tier feed.

Convex form increases carriage capacity and flat surface offers easy cleaning.

Trays have telescopic structure for easy handling with more than 10 year usage life.



LARGE DOORS...

All sections have own doors which work horizontally and offers one-handed operation. Triple lock system means partridges do not get out.

Large door design provides easy access to all areas for placement or removal of partridges, inspection and cleaning. Door design is special for partridges to prevent male fight between sections.



CLOSED BUT LIGHT...

Partridge stock cages have closed sides and partitions. This prevents stress of birds because of motions in room.

Specially selected shiny blue color of cage combined with high grade semi transparent plastic material ensure max light and also creates relaxed open atmosphere effect.

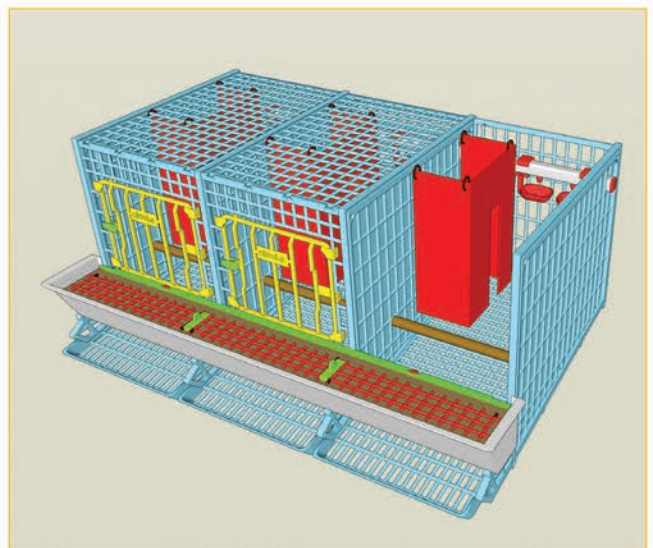


ENRICHMENTS...

Closed partitions between sections provide a sight barrier between males and prevent male fights.

Addition to the partitions, extra sight barrier application can be done in section by hanging proper barrier materials to the top part of cage.

Fully modular body gives chance to users for environmental enrichments specially for breeding partridge species like perch assembly to bottom or side parts.

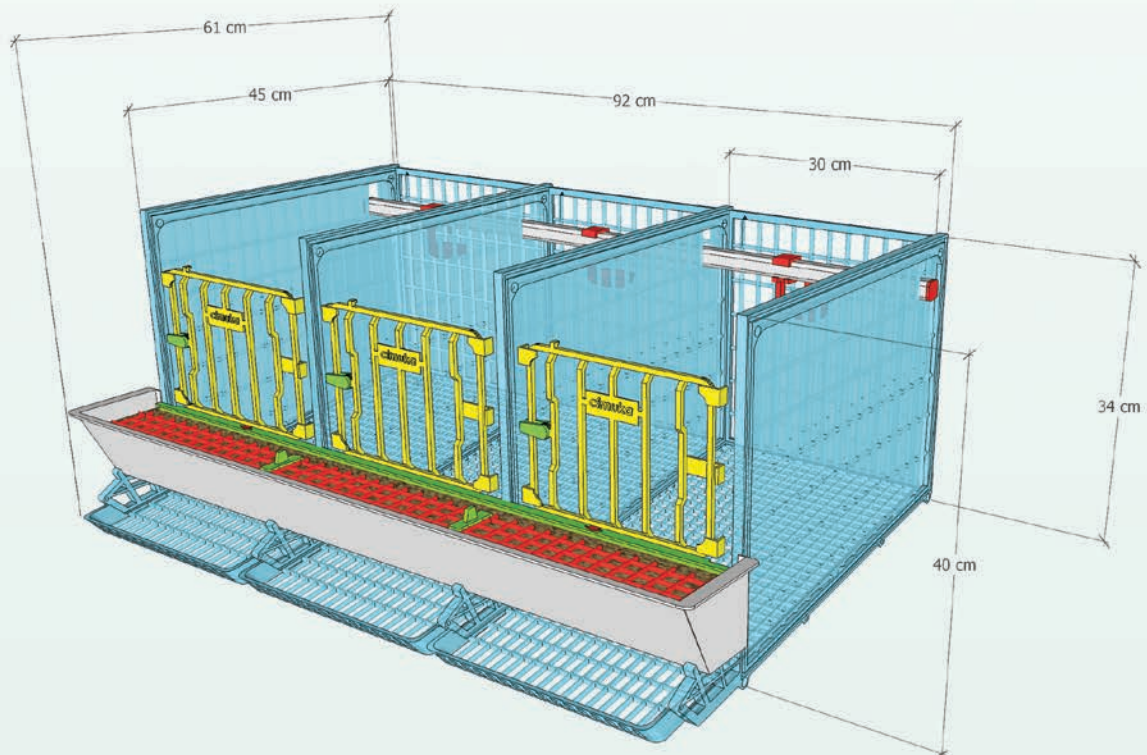


A WIDE RANGE OF MODELS...




Each section has a capacity of **3-4 adult partridge**.
Dimensions of each section is **45 x 30 x 40 h cm**.
Intended for use with **different partridge species**.

Sections can be added **horizontally up to 3**. And 3 section models can be towered up to **4 tier**. Thanks to Cimuka's **innovative and patented modular design**.

Comfortplast Partridge Stock Cages have also **1 section - MiNi** and **2 section- MiDi** models for hobbyists. They are directly placed on specially designed manure tray.



MODELS AND DIMENSIONS

MODELS			ASSEMBLED (WITH WATER RESERVOIR)		FLAT PACK
KYK-01-1K MINI	1 section		Width: Depth: Height:	34 cm 62 cm 59 cm	52 cm 65 cm 13 cm
			Weight:		4,5 kg
			Reservoir:	4 L	
KYK-02-1K MIDI	2 sections		Width: Depth: Height:	66 cm 62 cm 59 cm	97 cm 52 cm 14 cm
			Weight:		7,2 kg
			Reservoir:	4 L	
KYK-03-1K	3 sections 1 tier		Width: Depth: Height:	98 cm 61 cm 73 cm	97 cm 60 cm 15 cm
			Weight:		12,2 kg
			Reservoir:	8 L	
KYK -03-2K	6 sections 2 tier		Width: Depth: Height:	98 cm 61 cm 119 cm	97 cm 60 cm 24 cm
			Weight:		21,9 kg
			Reservoir:	8 L	
KYK -03-3K	9 sections 3 tier		Width: Depth: Height:	98 cm 61 cm 173 cm	97 cm 60 cm 35 cm
			Weight:		29,9 kg
			Reservoir:	20 L	
KYK -03-4K	12 sections 4 tier		Width: Depth: Height:	98 cm 61 cm 220 cm	97 cm 60 cm 35 cm
			Weight:		38,5 kg
			Reservoir:	20 L	
KYK -03-TA	3 sections (Tier addition)		Width: Depth: Height:	96 cm 61 cm 49 cm	97 cm 52 cm 14 cm
			Weight:		9,8 kg
			Reservoir:	20 L	

- We reserve the right to change specifications, colors, dimensions due to our policy of improvement.
- Contact us for alternative designs.



Need More Help?

020 8591 2900

www.crescentquail.co.uk

sales@crescentquail.co.uk

